

TECHSTONE

Interior & Exterior Wall Art
Coating System

— MICRO-CEMENT —



PRODUCT DESCRIPTION

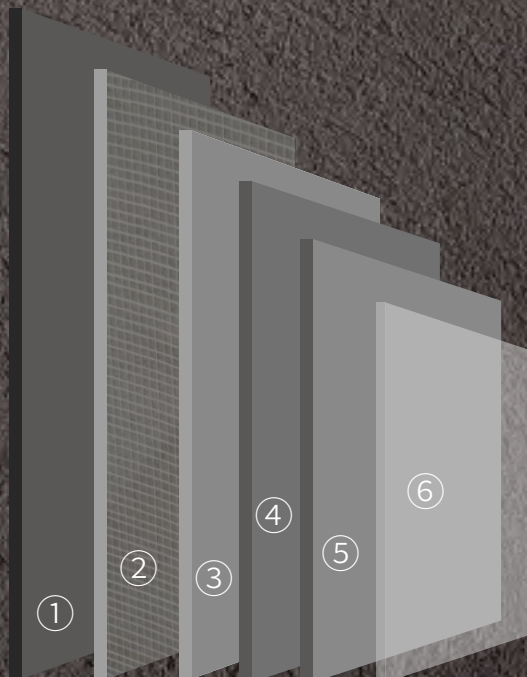
Micro cement is a decorative coating composed of silicate cement, additives and mineral pigments.

It is an inorganic ecological product based on cement as the main binder, which conforms to modern architecture simple, unadorned design aesthetic feeling.

More and more architects in the world adopt this antique craftsmanship. They believe that this is a noble simplicity, which seems simple, but actually has more artistic effect than splendor.

Micro cement ground construction sequence schematic

- ① Leveling layer. Plaster grassroots, used for deal with leveling
- ② Crack-proof layer. Mix resin, add "micro-primer" 1 time; glass fiber mesh 1 time
- ③ Prime the hardened layer. "Coarse micro cement" layer, Hybrid " micro-emulsion" (16:4 ratio), applied 1-2 times; polish 80-mesh sandpaper
- ④ Effect layer. " Fine micro cement" layer, Hybrid " micro-emulsion" (10:4 ratio), applied 1-2 times; polish 180-mesh sandpaper
- ⑤ Waterproof closed layer. Roller coating "Micro Primer" (note, here is primer) 2 times; polish 240-mesh sandpaper
- ⑥ Protect top coat layer. Mix "micro-solid" special top coat (two-component polyurethane top layer) 2 times; polish 240-mesh sandpaper



▪ MICRO-CEMENT

Reference dosage

Coarse sand: 2kg/m²

Medium sand: 1.5kg/m²

Fine sand: 0.7kg/m² (2 times)

SCOPE OF APPLICATION

- The characteristics of micro-cement itself may be used for Interior and Exterior
- Used for exterior walls to create elegant and advanced building design

Construction steps

- 1) Hang the net first, then use the penetrating primer to coat evenly
- 2) Coarses and material, add additives (16:4 ratio) and polish after the first batch of scraping <80-mesh coarse sandpaper
- 3) The operation is the same as above
- 4) The main material (fine sand), mixed with the additives (10:4 ratio), after scraping, polish using <80-mesh coarse sandpaper
- 5) Repeat (same as above)
- 6) Roller coating penetrating primer* (note, here is primer)
- 7) Special top coat° (after adding the two-component top coat), evenly roll the coating twice



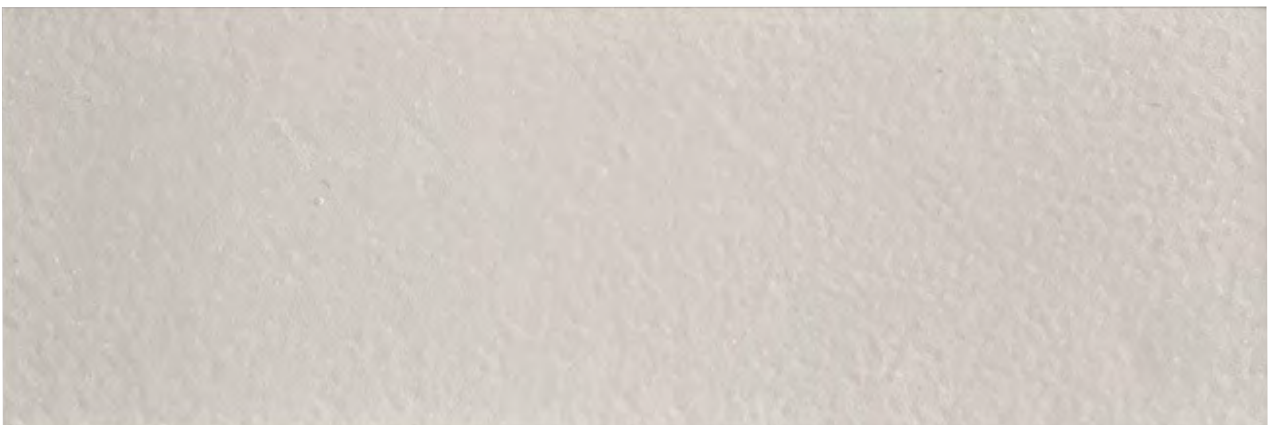
- MICROCEMENT PAINT



Coarse Sand

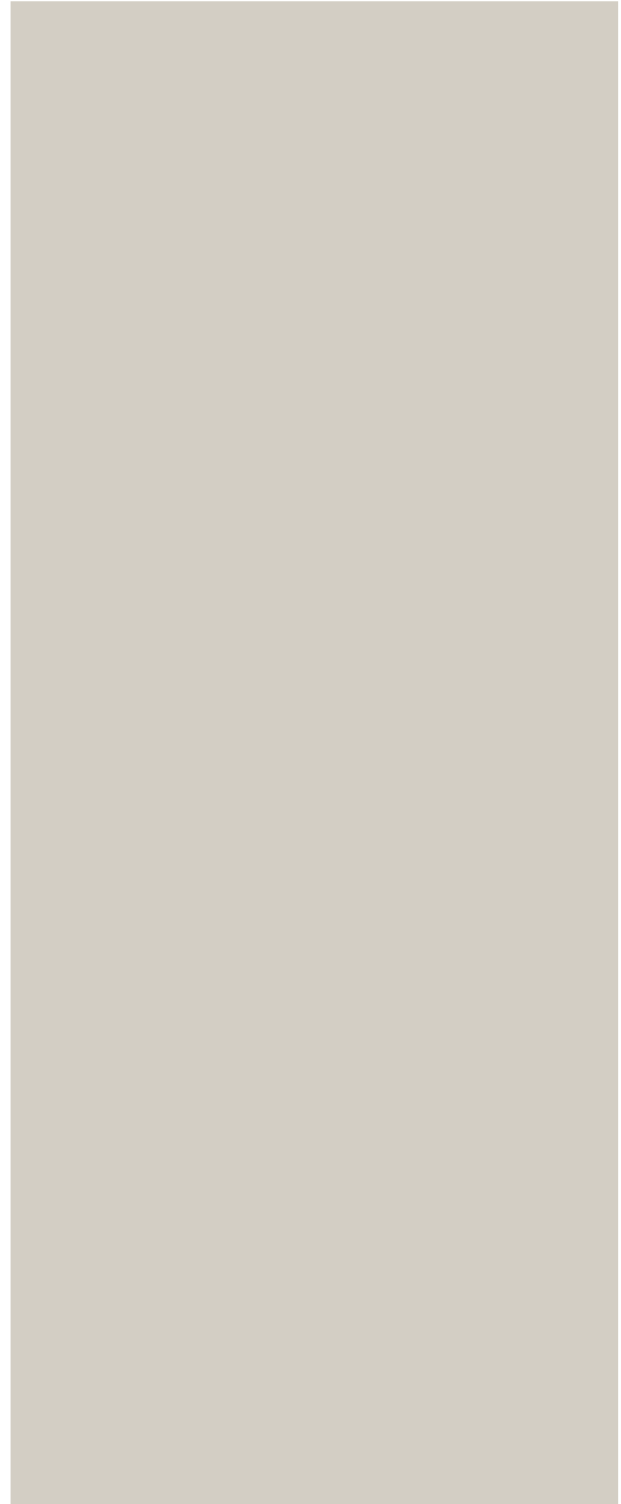


Medium Sand



Fine Sand

- MICROCEMENT PAINT

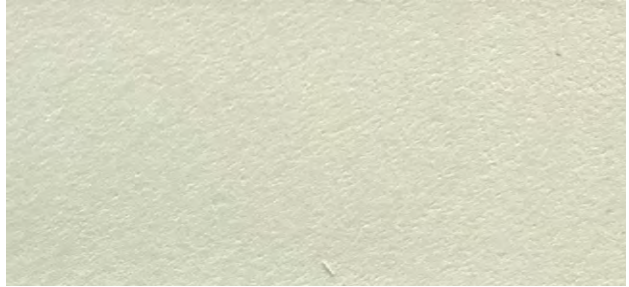


GOSSAMER VEIL

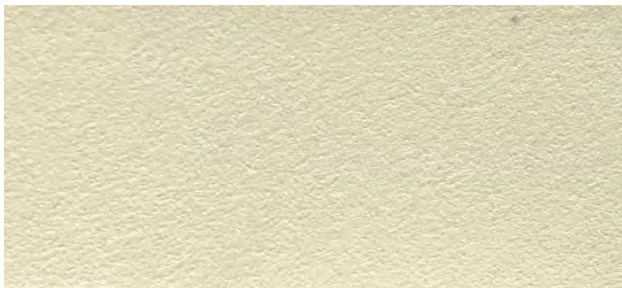
• MICROCEMENT PAINT



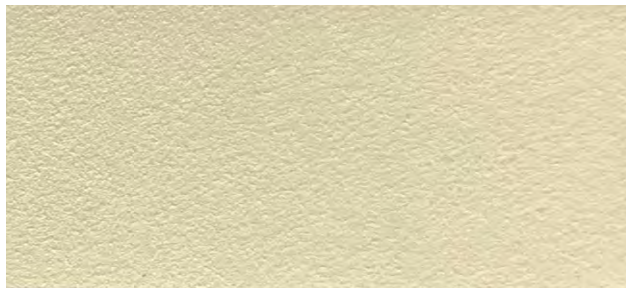
DOVE GRAY



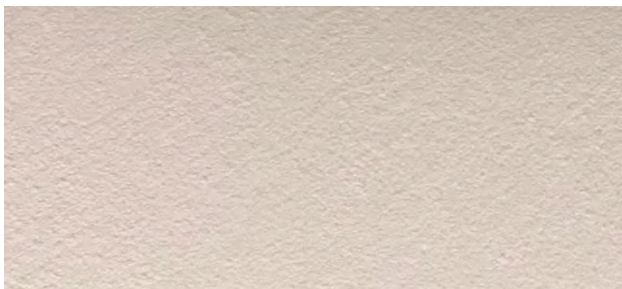
SANSTONE



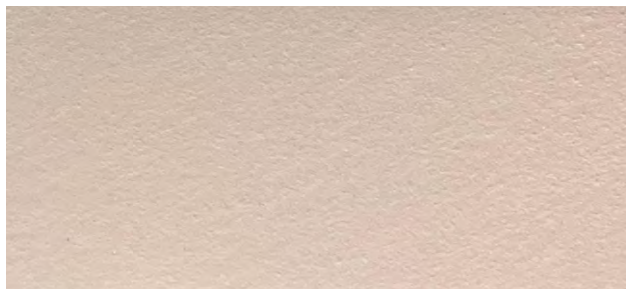
PURE IVORY



FRENCH VANILLA



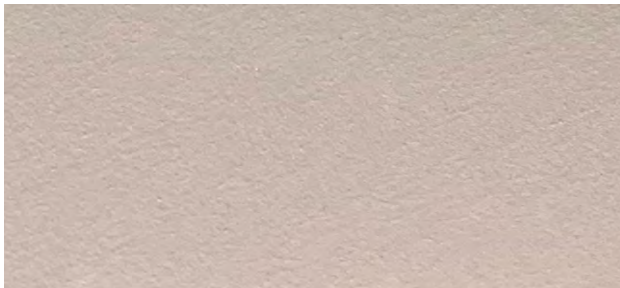
MUSHROOM WALL



BONA FIDE BEIGE



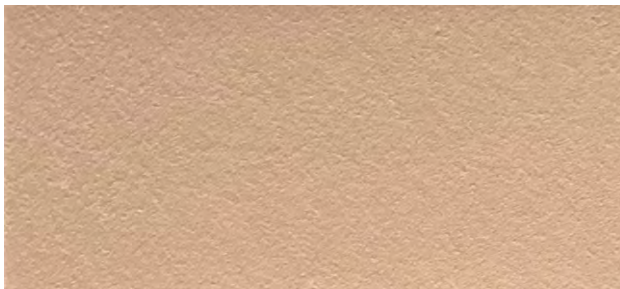
• MICROCEMENT PAINT



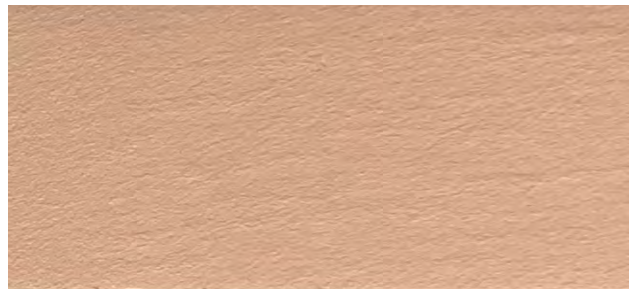
LIKEABLE SAND



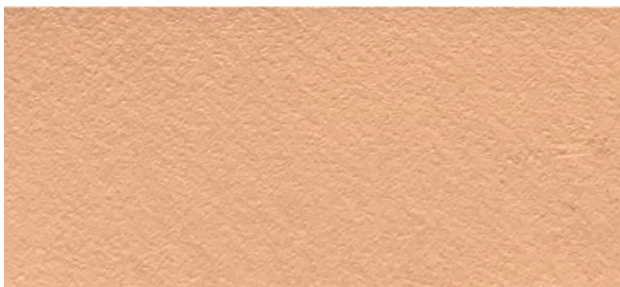
OYSTER SHELL



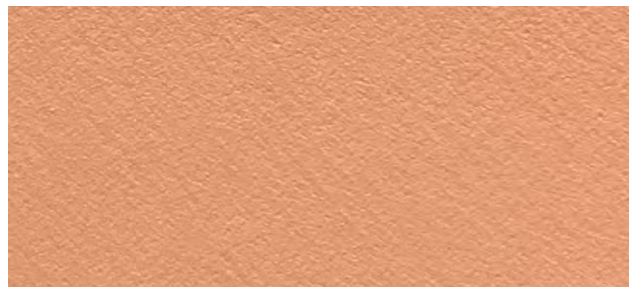
STRIP BRONZER



GUIZA COTTO

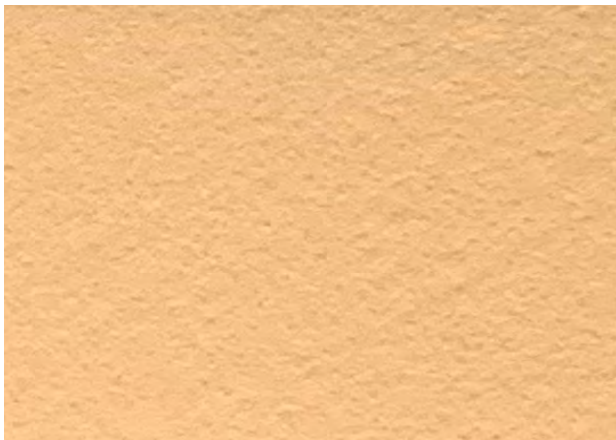


LIGHT SALMON

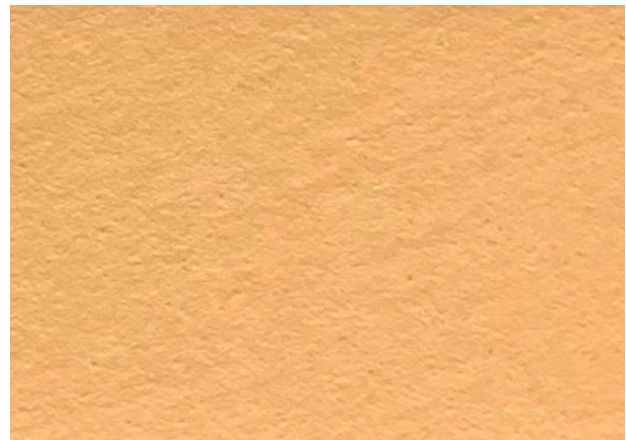


PALE COPPER

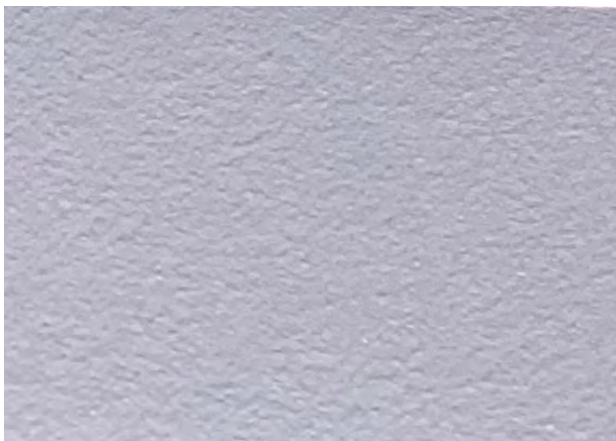
• MICROCEMENT PAINT



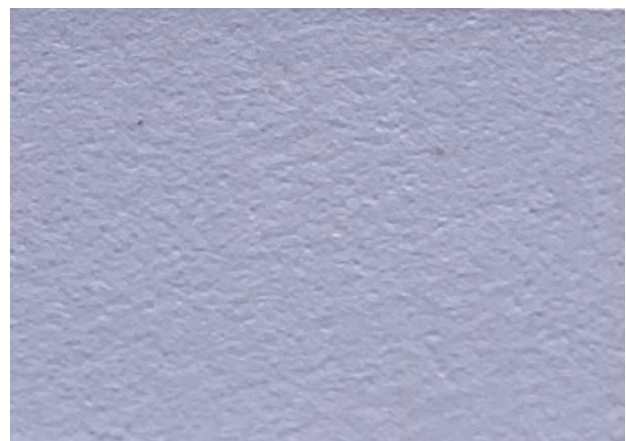
BURNT ORANGE



MELON OCHRE

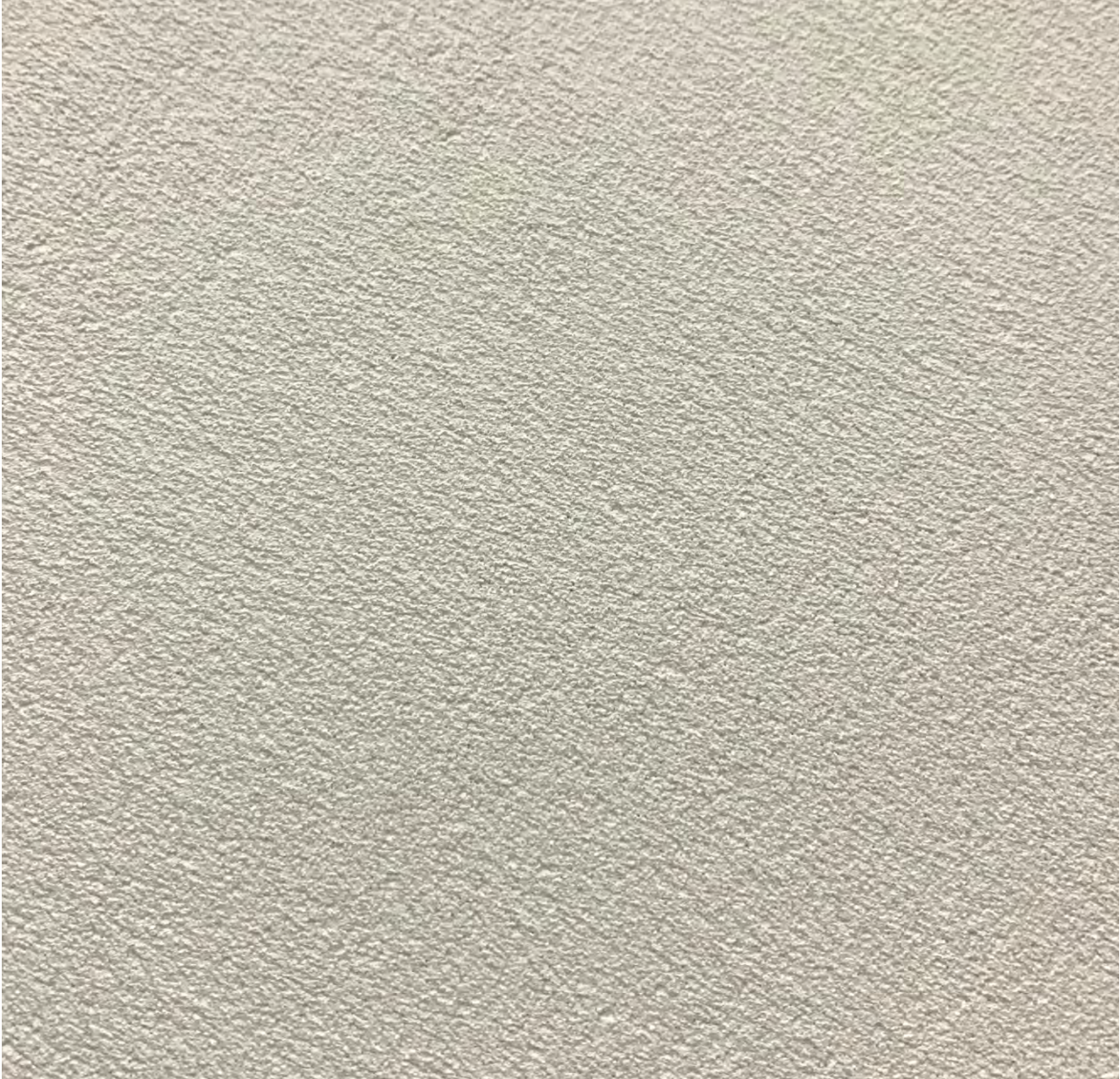


VERBENA LAVENDER



BLUISH VIOLET

- MICROCEMENT PAINT



SWISS COFFEE

