

TECHSTONE

In designing and constructing our projects we focus on using the best quality materials in conjunction with latest technology. We are proud to provide smart environmentally friendly coating system. Our projects require less maintenance, less operating costs, and reduces noise pollution that gives our clients tranquility.

DIAMOND SERIES

Our water based multi color stone coating has been applied on projects around the world. We have had success in emulating actual stone at a fraction of the cost and time required of natural stone products.

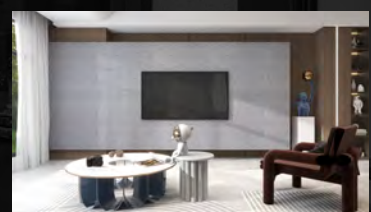
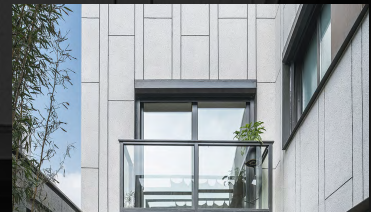


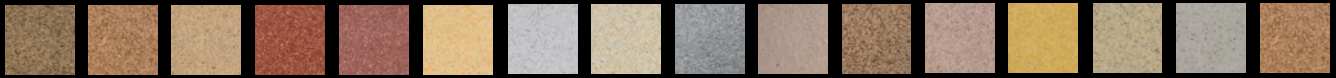
PRODUCT STRUCTURE

1. Base Material / Substrate
2. Primer
3. Diamond Stone Coating
4. Clear Top Coat



PAFCPIC Building Ground Floor Bayani Rd.,
Taguig, Philippines 1630
E. sales@portland-eco.com Ph. +632 8294 0478





DIAMOND SERIES

Diamond Series is made of special silicone-acrylic emulsion, sand, and additives. Its appearance is elegant with a strong European style.

Items Needed For Application



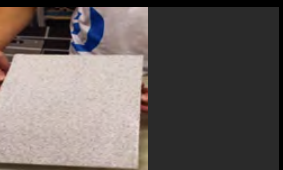
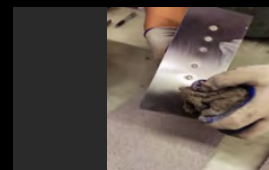
Paint Roller



Trowel



Batch Knife



Materials To Use

- Primer
- Diamond Stone Coating
- Top Coat

- Ensure that the surface is clean and pre-treated with waterproofing agents.
- Apply a skim coating to provide a level/plumb surface and sand the surface thereafter.
- Check that the surface is clean and free from oil and dirt residue to ensure a strong bond.
- Apply a surface primer that is compatible with the substrate (concrete, glass, aluminum, steel, wood, etc.).
- Use a stainless steel batch knife and scrape it to allow the surface to dry, then scrape again.
- Drying time is >4 hours and may vary depending on temperature and humidity.
- Once the surface is dry, use the stainless steel batch knife to flatten the surface and ensure it is flat.
- Apply the clear topcoat.
- For exterior use: Re-apply additional topcoat sealer for additional protection against fading.

Installation Guide

- 1 Apply a primer on the flat base surface.
- 2 Apply Diamond Stone coating
- 3 Scratch the coating once dry
- 4 Re-Apply Diamond Stone coating
- 5 Apply Clear Top Coat

Technical Specification

Surface Drying Time:
About 8 Hours

Coverage Rate
About 2-3.5kg/m²

Construction Thickness
1.5-2mm

Package Specification
5KG / 20KG Barrel

